

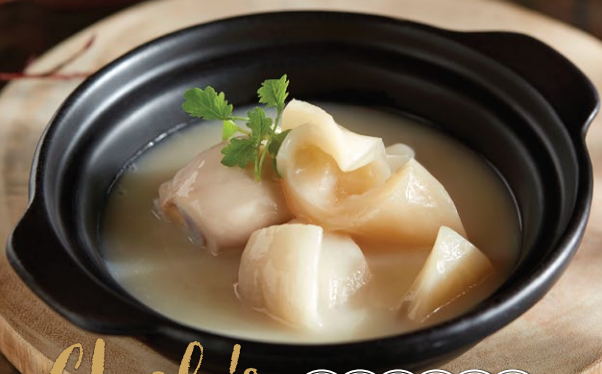
御寶

IMPERIAL TREASURE

SUPER PEKING DUCK

御寶至尊烤鴨店

Jewel Changi Airport, #01-219 | Tel: (+65) 6908 6689



Chef's 厨师特别介绍
Recommendation

椒盐鱿鱼须

Deep-fried Squid with Pepper & Salt

\$ 18

每碟 / Per Plate

京式花胶汤

Double-boiled Soup with
Superior Fish Maw & Chicken

\$ 55

每位 / Per Person

鸡丝竹笙烩花胶丝

Braised Shredded Superior Fish Maw with
Shredded Chicken & Bamboo Pith

\$ 38

每位 / Per Person

碧绿炒带子

Sautéed Scallop with Vegetables

\$ 60

小 / Small

姜片炸田鸡

Deep-fried Frog with Sliced Ginger

\$ 38

小 / Small

生炒牛肉饭

Fried Rice with Minced Beef

\$ 28

小 / Small

所有价格均需另加服务费和消费税。图片仅供参考。

All prices are subject to service charge & prevailing GST. Picture is for reference only.